



OWNER'S MANUAL



RS-V8DSP

8 CHANNEL PRO CAR DSP

CAR AUDIO SYSTEM

**PLEASE READ CAREFULLY BEFORE INSTALLING
OR OPERATED THIS UNIT**

WARNING

Make sure you choose a suitable place to mount the unit. The position should be completely dry with a good circulation of air, and from a mechanical point of view, very stable.

www.reissaudio.com.tr

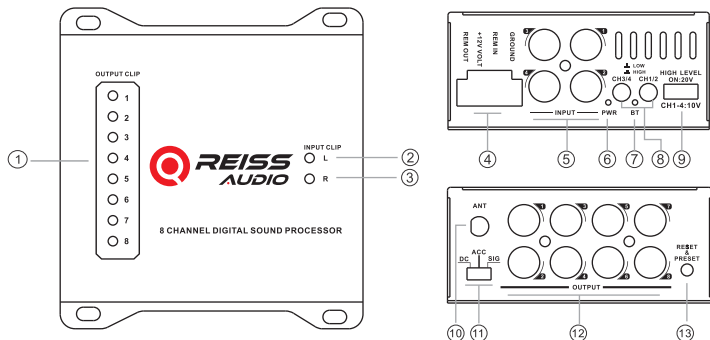
Index

Presentation.....	1
Description.....	2
Installation.....	3
Bluetooth connection.....	4
Technical specification.....	5

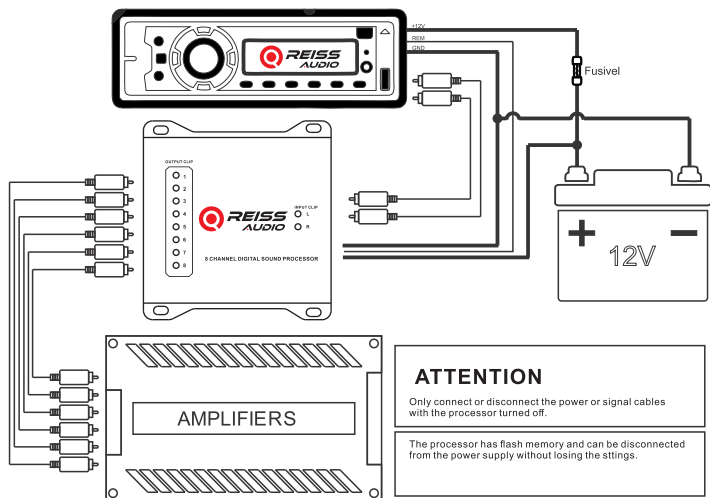
Presentation

Congratulations, you just bought a product with REISS Audio quality. Through engineers with years of experience, critical testing procedures and a high-tech laboratory, we have created a range of high quality products that reproduce the musical signals with the clarity and faithfulness you deserve.

To ensure the best operation of the product, please read this manual carefully before using the product. Keep the manual in a safe and accessible place for future reference.



1. **Clip Leds and Output Limiter:**When lit, it indicates that the audio output has reached its maximum level, and produces distorgao or signal to show limer's activity. If the limiter is disabled, the limiter will be used as an output clip, and if the limiter has been triggered, it will be used as both an output clip and a limiter indicator.
2. **Clip Led of Left Inputs**
3. **Clip Led of Right Inputs**
4. **Power connector:**Connectors responsible for supplying + 12V, REM, GND of the processor.
5. **RCA input connector:** Up to 4 channels can be connected.
6. **Processor Indicator Led On**
7. **Bluetooth Connection Indicator Ligh**
8. **1CH to 4CH high-level input and low-level input conversion switch:**
chButton lift height is: low-level input
The button being pressed down indicates: high-level input
9. **High level input and power connect 1CH-4CH**
10. **Bluetooth antenna**
11. **Machine start mode switch:** ACC: Power on when the car starts.
HOST: Boot up when the host is turned on.When the switch is turned to the "AUDIO" terminal, the machine is started by low level signal
12. **RCA output connector:** Up to 8 channels can be connected.
13. **Preset reset button**



1. Read the entire product manual carefully before beginning installation.
2. For safety, disconnect the negative from the battery before beginning installation.
3. Keep all RCA cables away from power cables.
4. Use high quality cables and connectors to minimize loss and noise.
5. If the equipment is grounded on the vehicle chassis, scrape all the paint off the grounding point to ensure a good connection.

Noise Problems:

1. Check that all equipment in the system is grounded at the same point, in order to avoid ground loops.
2. Check the processor output RCA cables, the shorter and better quality, the lower the noise.
3. Make a correct gain structure, making the gain of the amplifiers as small possible.
4. Use quality cables and keep away from any potential sources of noise.
5. Contact our technical support or check the tips on our social networks

Bluetooth

- 1-Download the app from the Google Play Store or Apple Store.
- 2-Active Bluetooth on your smartphone.
- 3-Activate the location of your Smartphone.
- 4-Open the app and it will display the following information



- 5-Select the processor and enter the password, the factory password is 000000, to set a new password, just enter any password other than 000000. If you forget your own password, press and hold the reset button for 15 seconds to reset the password to the factory password 000000.
- 6-If you want to reset your password, you need to reset the processor to all factory defaults.



- 7-Congratulations, you are connected to your processor, now with a simple and intuitive interface you can manage your sound system completely by using the following.

Routing Channel
General Gain
Channel Gain
Frequency Cuts
Limiter
Input Equalizer

Output Equalizer
Polarity Inversion
Time Alignment
Configurable Memories
Battery Monitoring
Limiter Monitoring

Compatible with android 7 or above/ios 13 or above

Processing Technical Documents

Channel Routing (routing channel)

Routing Option	A/B/C/D/A+B/A+C/B+C
----------------	---------------------

Gain

General Gain	-53 to 0db
Channel Gain	-33 to + 9db

Frequency Cut (crossover)

Cut-off frequency	20Hz to 20kHz
Type of Cuts	Linkwitz-Riley/butterworth/Bessel
Attenuations	6/12/18/24/36/48 dB/8 °

Input Equalizer (Eq in)

Equalization Band	31 Bands
Gain	-12 to + 12dB

Channel Equalizer (eq channel)

Equalization Bands	8 parameter per channel
Gain	-12 to + 12dB
Q Factor	0.6-9.9

Time Alignment (delay)

Time	0 to 18.95 ms
Distance	0 to 6500mm

Limiter

Threshold	-53 to + 6dB
Attack	1 to 200ms
Release	1 to 988ms

Polarity Inversion (Polarity)

Inversion	0 or 180 °
-----------	------------

Memory (preset)

Memories	3-100% configurable
----------	---------------------

* These typical data may vary slightly.

Technical Specification

Input (left/right)

Inputs	4
Type	Electron symmetry
Connectors	RCA
Input level max	4.00 vrms (+ 14dbu)
Inlet Impedance	100Kohm

Output

Outputs	8
Connectors	RCA
Type	Electronically Symmetrical
Maximum Output Level	3.50 Vrms (+ 13dBu)
Output Impedance	100ohm

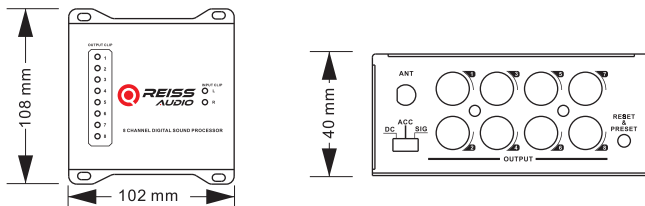
DSP

Frequency Response	10Hz to 24KHz (-1dB)
THD +N	<0,01%
Signal Latency	< 0.6 ms
Bit rate	32-bit
Sampling frequency	96khz

Power Supply

voltage DC	10 ~ 15vDC
Maximum consumption	300mA

Dimensions





OWNER'S MANUAL

TECHNICAL SPECIFICATION

MODEL:RS-V8DSP	Maximum Output Level: 3.50 Vrms (+13 dBu)
Inputs: 4	Output Impedance: 100 ohm
Type: Electron symmetry	Frequency Response: 10 Hz to 24 kHz (-1 dB)
Connectors: RCA	THD + N: < 0.01%
Input level max: 4.00 Vrms (+14 dBu)	Signal Latency: < 0.6 ms
Inlet Impedance: 100 Kohm	Bit Rate: 32-bit
Outputs: 8	Sampling Frequency: 96 kHz
Connectors: RCA	Voltage DC: 10 ~ 15 VDC
Type: Electronically Symmetrical	Maximum Consumption: 300 mA

RS-V8DSP

8 CHANNEL PRO CAR DSP

IMPORTER COMPANY

REİS ELEKTRONİK SANAYİ VE TİCARET A.Ş

Mahmutbey Mah. Küçük Halkalı Cad.No:9 Bağcılar-İstanbul

INFO : +90 212 447 02 02 - +90 212 659 07 22

www.reissaudio.com.tr